

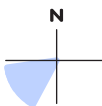




View flat at a comfortable arm's length

Photomontage

OS reference:	300516 E 967595 N	Horizontal field of view:	53.5° (planar projection)	Camera:	Nikon Z 6II
Eye level:	50.61 m AOD	Principal distance:	812.5 mm	Lens:	50mm f/1.4f
Direction of view:	235°	Paper size:	841 x 297 mm (half A1)	Camera height:	1.5m AGL
Nearest turbine:	15.041 km	Correct printed image size:	820 x 260 mm	Date and time:	08/03/2022 10:11



**Figure 7.23f**  
**Viewpoint 19: A836 at Balmore**  
Photomontage