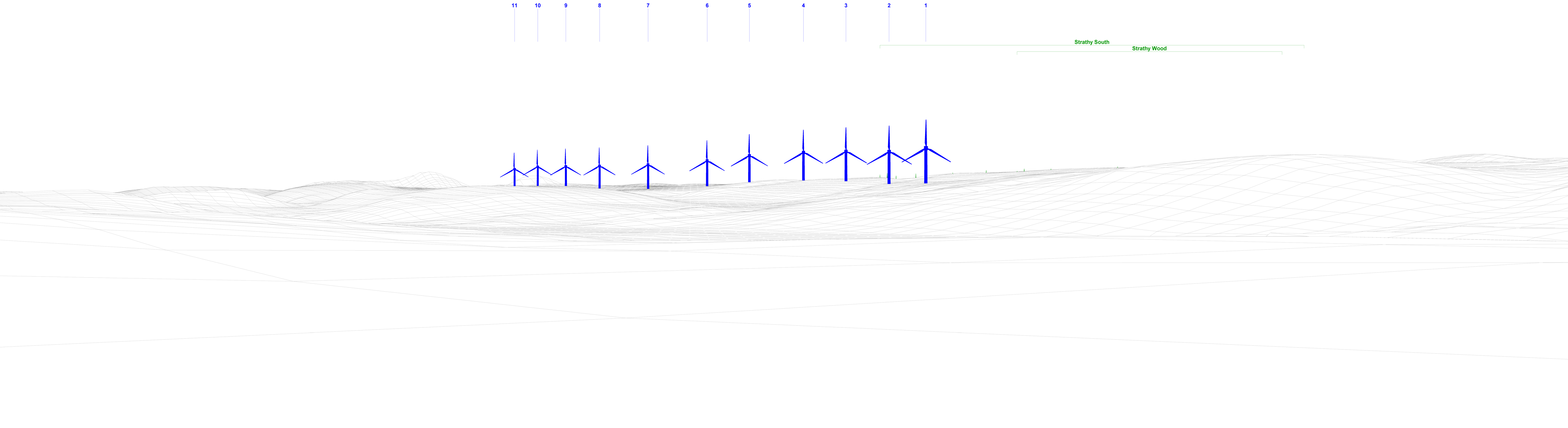


View flat at a comfortable arm's length



Wireline view

OS reference:	290172 E 963999 N	Horizontal field of view:	53.5° (planar projection)	Camera:	Nikon Z 6II
Eye level:	43.69 m AOD	Principal distance:	812.5 mm	Lens:	50mm f/1.4f
Direction of view:	210°	Paper size:	841 x 297 mm (half A1)	Camera height:	1.5m AGL
Nearest turbine:	3.702 km	Correct printed image size:	820 x 260 mm	Date and time:	08/03/2022 09:02

Legend

 Kirkton

 Operational Wind Farm

 Consented Wind Farm

 In Planning Wind Farm

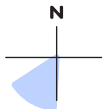



Figure 7.8b
Viewpoint 4: A836 at the Junction to Bighouse
Wireline



View flat at a comfortable arm's length

Photomontage

OS reference:	290172 E 963999 N	Horizontal field of view:	53.5° (planar projection)	Camera:	Nikon Z 6II
Eye level:	43.69 m AOD	Principal distance:	812.5 mm	Lens:	50mm f/1.4f
Direction of view:	210°	Paper size:	841 x 297 mm (half A1)	Camera height:	1.5m AGL
Nearest turbine:	3.702 km	Correct printed image size:	820 x 260 mm	Date and time:	08/03/2022 09:02

Legend
 Potential Borrow Pit

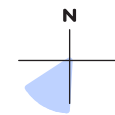


Figure 7.8c
Viewpoint 4: A836 at the Junction to Bighouse
Photomontage