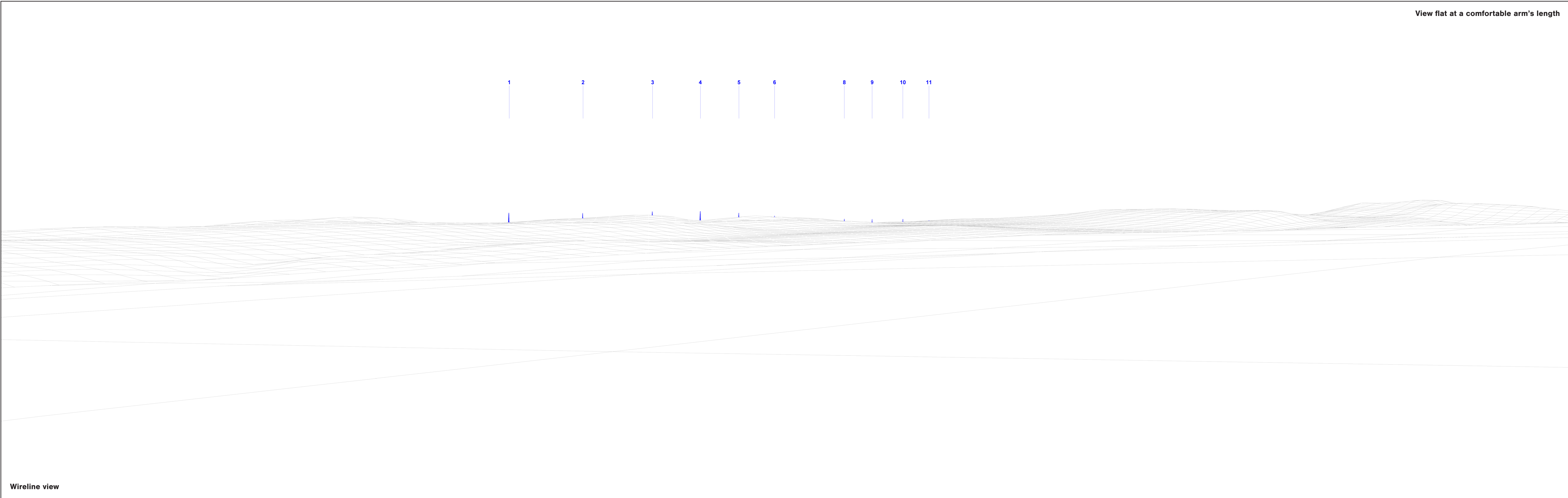


View flat at a comfortable arm's length



Wireline view

OS reference:	282728 E 965421 N	Horizontal field of view:	53.5° (planar projection)	Camera:	Nikon Z 6II
Eye level:	76.93 m AOD	Principal distance:	812.5 mm	Lens:	50mm f/1.4f
Direction of view:	140°	Paper size:	841 x 297 mm (half A1)	Camera height:	1.5m AGL
Nearest turbine:	6.930 km	Correct printed image size:	820 x 260 mm	Date and time:	08/03/2022 14:52

Legend

 Kirkton

 Operational Wind Farm

 Consented Wind Farm

 In Planning Wind Farm

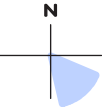


Figure 7.11c
Viewpoint 7: A836, west of Strathy
Wireline



Photomontage

OS reference:	282728 E 965421 N	Horizontal field of view:	53.5° (planar projection)	Camera:	Nikon Z 6II
Eye level:	76.93 m AOD	Principal distance:	812.5 mm	Lens:	50mm f/1.4f
Direction of view:	140°	Paper size:	841 x 297 mm (half A1)	Camera height:	1.5m AGL
Nearest turbine:	6.930 km	Correct printed image size:	820 x 260 mm	Date and time:	08/03/2022 14:52

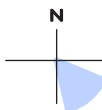


Figure 7.11d
Viewpoint 7: A836, west of Strathy
Photomontage