

OS reference: 293754 E 943063 N
Eye level: 236.31 m AOD
Direction of view: 340°
Nearest turbine: 15.946 km

Horizontal field of view: 90° (cylindrical projection)
Principal distance: 522 mm
Paper size: 841 x 297 mm (half A1)
Correct printed image size: 820 x 260 mm

Camera: Nikon Z 6II
Lens: 50mm f/1.4f
Camera height: 1.5m AGL
Date and time: 19/05/2022 09:25

Legend



Kirkton



Operational
Wind Farm



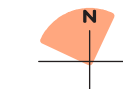
Consented Wind
Farm



In Planning Wind
Farm



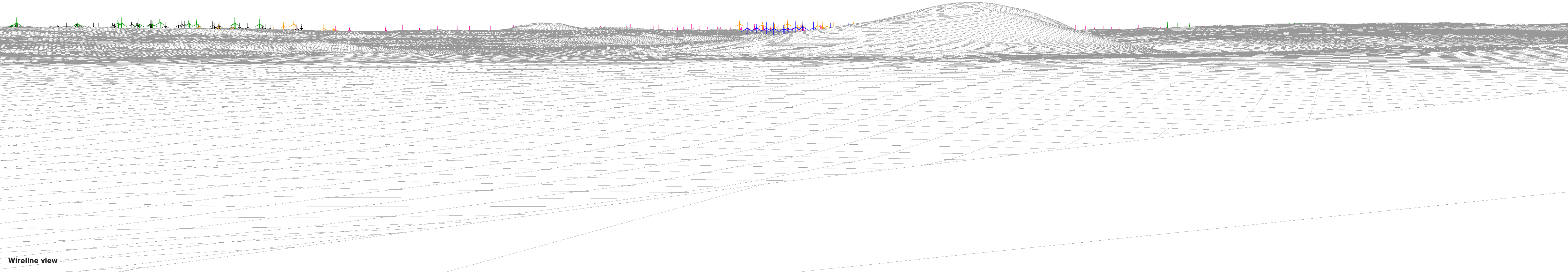
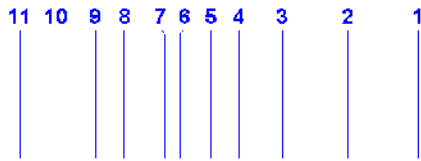
Scoping Wind
Farm



SEI Figure 7.16b
Viewpoint 12: Northern edge of Causeymire - Knockfin Flows Wild Land Area

Panorama with Cumulative Wireline (view 2 of 2)

View flat at a comfortable arm's length



Wireline view

OS reference: 293754 E 943063 N
Eye level: 236.31 m AOD
Direction of view: 340°
Nearest turbine: 15.946 km

Horizontal field of view: 53.5° (planar projection)
Principal distance: 812.5 mm
Paper size: 841 x 297 mm (half A1)
Correct printed image size: 820 x 260 mm

Camera: Nikon Z 6II
Lens: 50mm f/1.4f
Camera height: 1.5m AGL
Date and time: 19/05/2022 09:25

Legend



Kirkton



Operational
Wind Farm



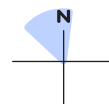
Consented Wind
Farm



In Planning Wind
Farm



Scoping Wind
Farm



SEI Figure 7.16c
Viewpoint 12: Northern edge of Causeymire - Knockfin Flows Wild Land Area

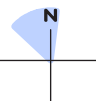
Wireline



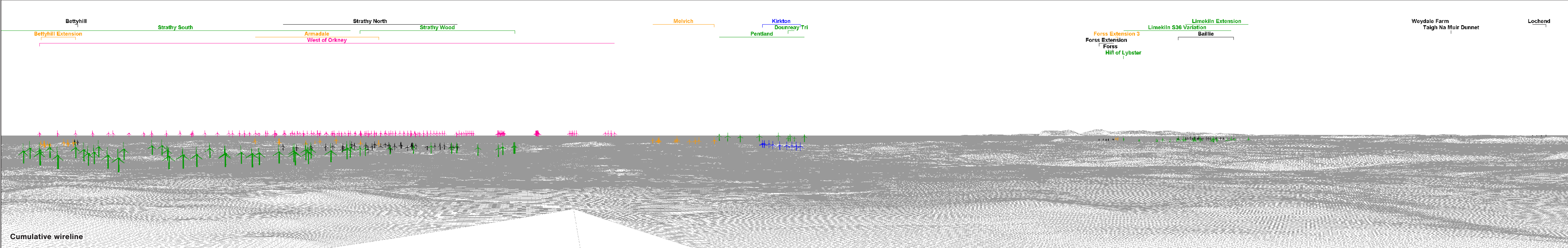
View flat at a comfortable arm's length

Photomontage

OS reference:	293754 E 943063 N	Horizontal field of view:	53.5° (planar projection)	Camera:	Nikon Z 6II
Eye level:	236.31 m AOD	Principal distance:	812.5 mm	Lens:	50mm f/1.4f
Direction of view:	340°	Paper size:	841 x 297 mm (half A1)	Camera height:	1.5m AGL
Nearest turbine:	15.946 km	Correct printed image size:	820 x 260 mm	Date and time:	19/05/2022 09:25



SEI Figure 7.16d
Viewpoint 12: Northern edge of Causeymire - Knockfin Flows Wild Land Area
Photomontage



OS reference: 283179 E 941180 N
Eye level: 566.2 m AOD
Direction of view: 15°
Nearest turbine: 17.372 km

Horizontal field of view: 90° (cylindrical projection)
Principal distance: 522 mm
Paper size: 841 x 297 mm (half A1)
Correct printed image size: 820 x 260 mm

Camera: Nikon Z 6II
Lens: 50mm f/1.4f
Camera height: 1.5m AGL
Date and time: 21/04/2020 11:03

Legend



Kirkton



Operational
Wind Farm



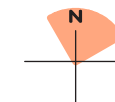
Consented Wind
Farm



In Planning Wind
Farm

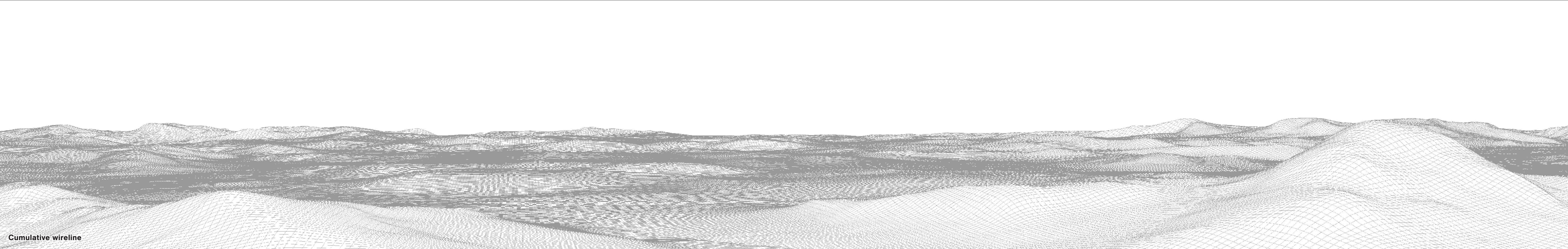


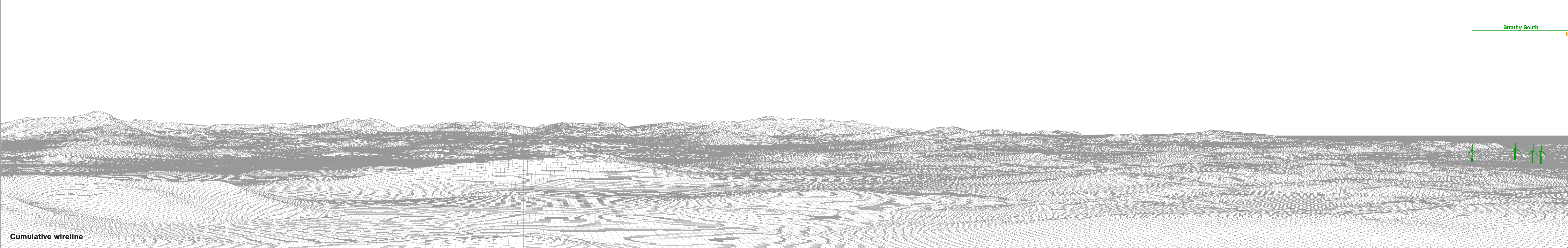
Scoping Wind
Farm



SEI Figure 7.17a
Viewpoint 13: Ben Griam Beg
Panorama with Cumulative Wireline (view 1 of 4)







OS reference: 283179 E 941180 N
Eye level: 566.2 m AOD
Direction of view: 285°
Nearest turbine: 17.372 km

Horizontal field of view: 90° (cylindrical projection)
Principal distance: 522 mm
Paper size: 841 x 297 mm (half A1)
Correct printed image size: 820 x 260 mm

Camera: Nikon Z 6II
Lens: 50mm f/1.4f
Camera height: 1.5m AGL
Date and time: 21/04/2020 11:03

Legend



Kirkton



Operational Wind Farm



Consented Wind Farm



In Planning Wind Farm

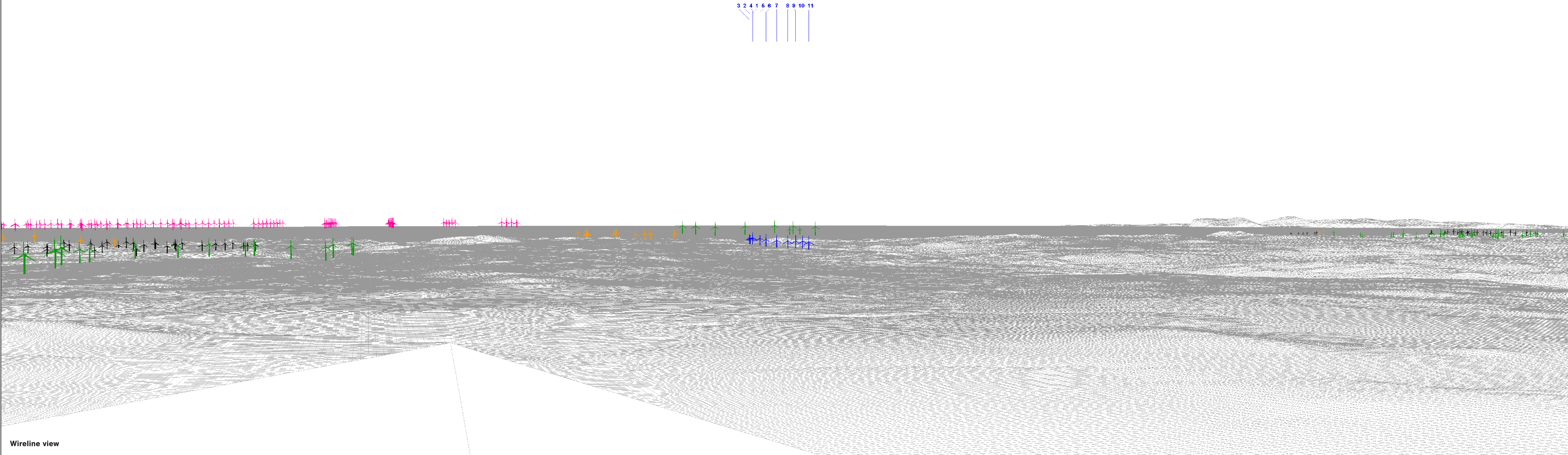


Scoping Wind Farm



SEI Figure 7.17d
Viewpoint 13: Ben Griam Beg
Panorama with Cumulative Wireline (view 4 of 4)

View flat at a comfortable arm's length



Wireline view

OS reference: 283179 E 941180 N
Eye level: 566.2 m AOD
Direction of view: 15°
Nearest turbine: 17.372 km

Horizontal field of view: 53.5° (planar projection)
Principal distance: 812.5 mm
Paper size: 841 x 297 mm (half A1)
Correct printed image size: 820 x 260 mm

Camera: Nikon Z 6II
Lens: 50mm f/1.4f
Camera height: 1.5m AGL
Date and time: 21/04/2020 11:03

Legend



Kirkton



Operational
Wind Farm



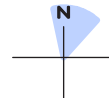
Consented Wind
Farm



In Planning Wind
Farm



Scoping Wind
Farm



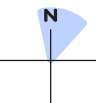
SEI Figure 7.17e
Viewpoint 13: Ben Giam Beg
Wireline



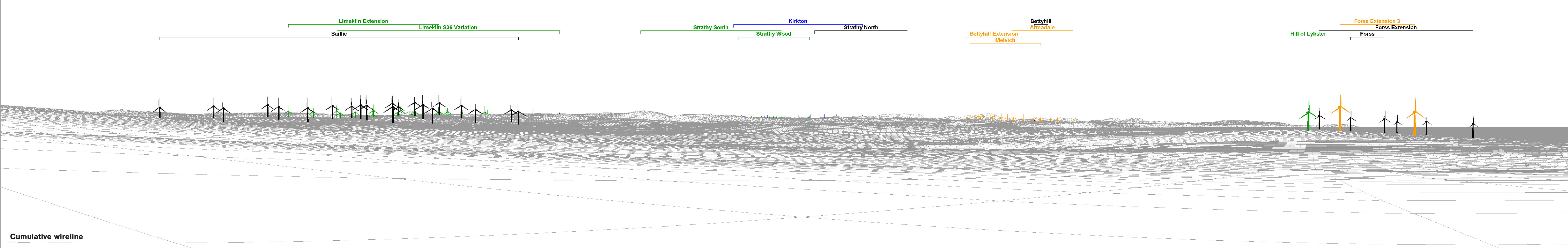
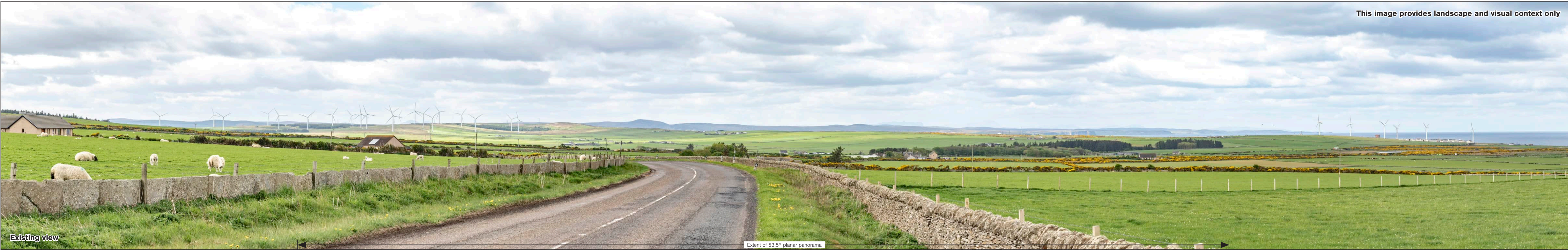
View flat at a comfortable arm's length

Photomontage

OS reference:	283179 E 941180 N	Horizontal field of view:	53.5° (planar projection)	Camera:	Nikon Z 6II
Eye level:	566.2 m AOD	Principal distance:	812.5 mm	Lens:	50mm f/1.4f
Direction of view:	15°	Paper size:	841 x 297 mm (half A1)	Camera height:	1.5m AGL
Nearest turbine:	17.372 km	Correct printed image size:	820 x 260 mm	Date and time:	21/04/2020 11:03



SEI Figure 7.17f
Viewpoint 13: Ben Griam Beg
Photomontage



OS reference: 305647 E 969395 N
Eye level: 72.9 m AOD
Direction of view: 240°
Nearest turbine: 19.517 km

Horizontal field of view: 90° (cylindrical projection)
Principal distance: 522 mm
Paper size: 841 x 297 mm (half A1)
Correct printed image size: 820 x 260 mm

Camera: Nikon Z 6II
Lens: 50mm f/1.4f
Camera height: 1.5m AGL
Date and time: 08/03/2022 10:29

Legend



Kirkton



Operational Wind Farm



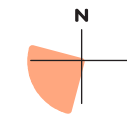
Consented Wind Farm



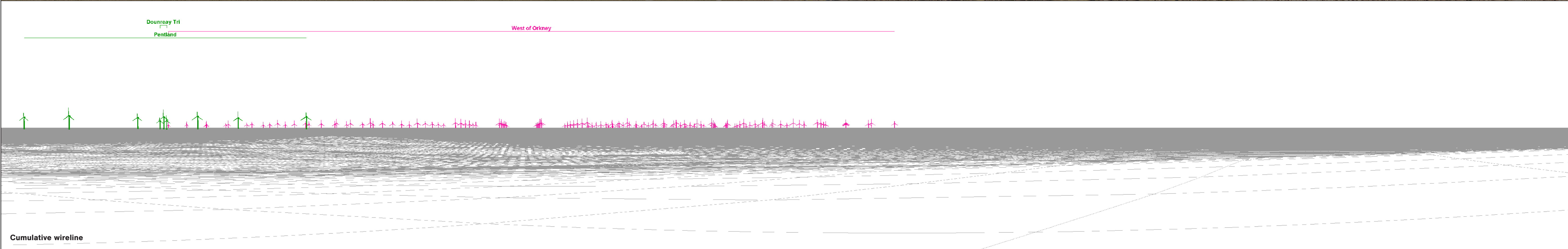
In Planning Wind Farm



Scoping Wind Farm



SEI Figure 7.18a
Viewpoint 14: A836, Forss
Panorama with Cumulative Wireline (view 1 of 2)



OS reference: 305647 E 969395 N
Eye level: 72.9 m AOD
Direction of view: 330°
Nearest turbine: 19.517 km

Horizontal field of view: 90° (cylindrical projection)
Principal distance: 522 mm
Paper size: 841 x 297 mm (half A1)
Correct printed image size: 820 x 260 mm

Camera: Nikon Z 6II
Lens: 50mm f/1.4f
Camera height: 1.5m AGL
Date and time: 08/03/2022 10:29

Legend



Kirkton



Operational
Wind Farm



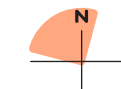
Consented Wind
Farm



In Planning Wind
Farm

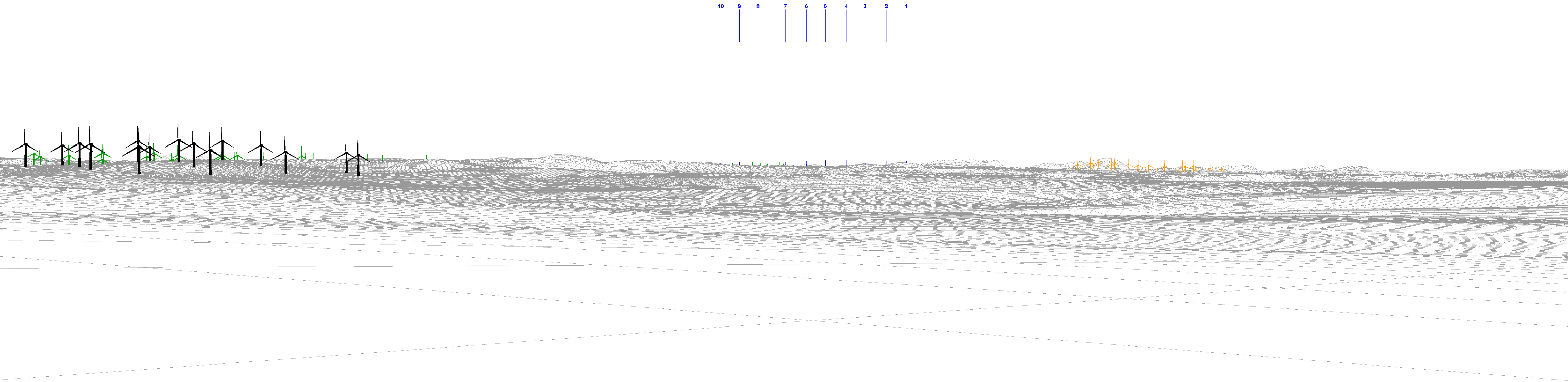


Scoping Wind
Farm



SEI Figure 7.18b
Viewpoint 14: A836, Forss
Panorama with Cumulative Wireline (view 2 of 2)

View flat at a comfortable arm's length



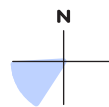
Wireline view



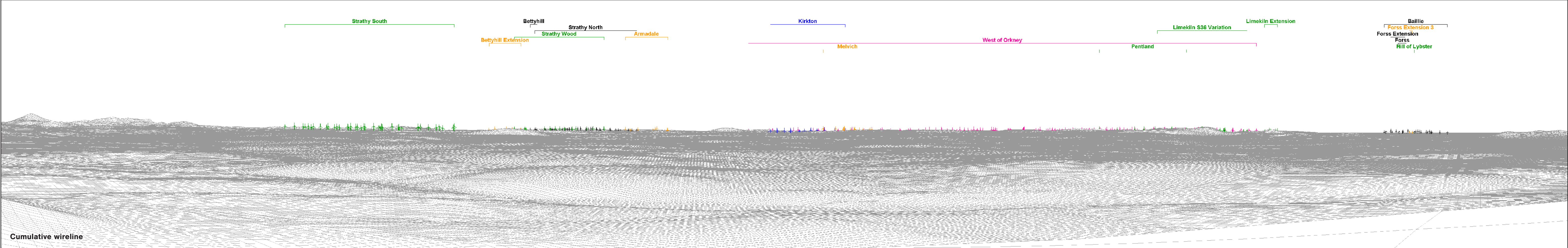
View flat at a comfortable arm's length

Photomontage

OS reference:	305647 E 969395 N	Horizontal field of view:	53.5° (planar projection)	Camera:	Nikon Z 6II
Eye level:	72.9 m AOD	Principal distance:	812.5 mm	Lens:	50mm f/1.4f
Direction of view:	240°	Paper size:	841 x 297 mm (half A1)	Camera height:	1.5m AGL
Nearest turbine:	19.517 km	Correct printed image size:	820 x 260 mm	Date and time:	08/03/2022 10:29



SEI Figure 7.18d
Viewpoint 14: A836, Forss
Photomontage



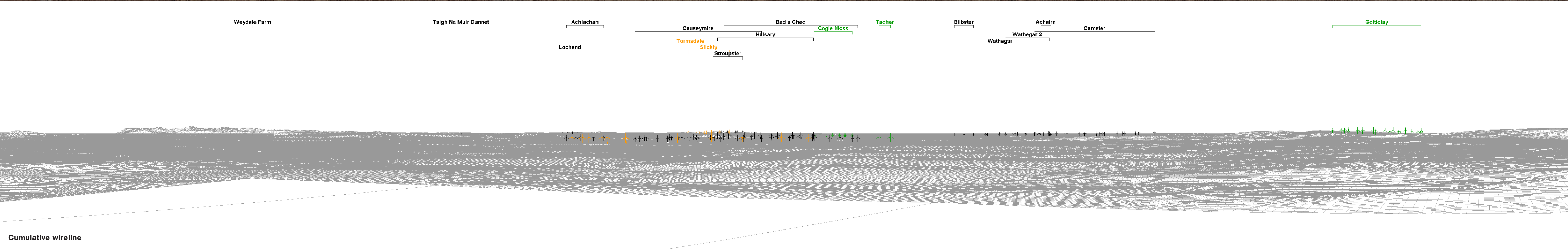
OS reference: 304562 E 938649 N
Eye level: 345.84 m AOD
Direction of view: 320°
Nearest turbine: 25.444 km

Horizontal field of view: 90° (cylindrical projection)
Principal distance: 522 mm
Paper size: 841 x 297 mm (half A1)
Correct printed image size: 820 x 260 mm

Camera: Nikon Z 6II
Lens: 50mm f/1.4f
Camera height: 1.5m AGL
Date and time: 07/03/2022 10:44



SEI Figure 7.19a
Viewpoint 15: Ben Alisky
Panorama with Cumulative Wireline (view 1 of 3)



OS reference: 304562 E 938649 N
Eye level: 345.84 m AOD
Direction of view: 50°
Nearest turbine: 25.444 km

Horizontal field of view: 90° (cylindrical projection)
Principal distance: 522 mm
Paper size: 841 x 297 mm (half A1)
Correct printed image size: 820 x 260 mm

Camera: Nikon Z 6II
Lens: 50mm f/1.4f
Camera height: 1.5m AGL
Date and time: 07/03/2022 10:44

Legend



Kirkton



Operational
Wind Farm



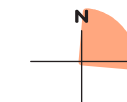
Consented Wind
Farm



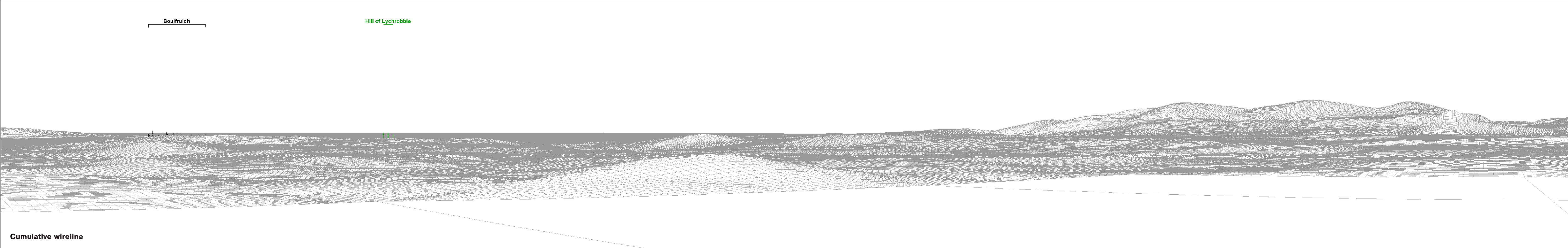
In Planning Wind
Farm



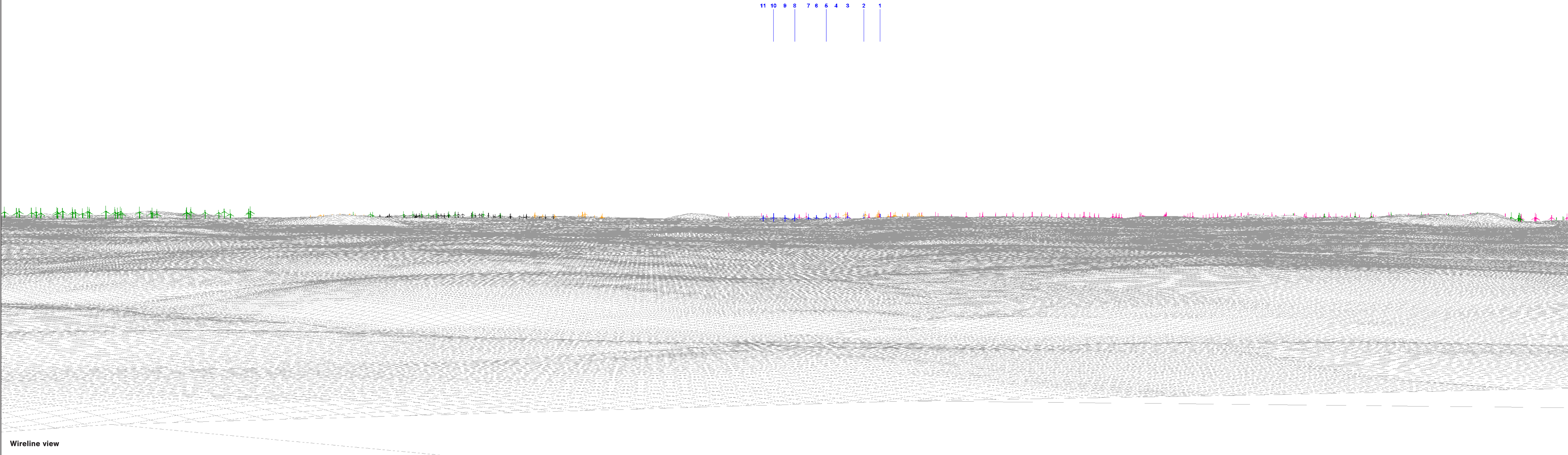
Scoping Wind
Farm



SEI Figure 7.19b
Viewpoint 15: Ben Alisky
Panorama with Cumulative Wireline (view 2 of 3)



View flat at a comfortable arm's length



Wireline view

OS reference: 304562 E 938649 N
Eye level: 345.84 m AOD
Direction of view: 320°
Nearest turbine: 25.444 km

Horizontal field of view: 53.5° (planar projection)
Principal distance: 812.5 mm
Paper size: 841 x 297 mm (half A1)
Correct printed image size: 820 x 260 mm

Camera: Nikon Z 6II
Lens: 50mm f/1.4f
Camera height: 1.5m AGL
Date and time: 07/03/2022 10:44

Legend



Kirkton



Operational
Wind Farm



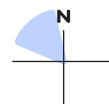
Consented Wind
Farm



In Planning Wind
Farm



Scoping Wind
Farm



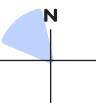
SEI Figure 7.19d
Viewpoint 15: Ben Alisky
Wireline



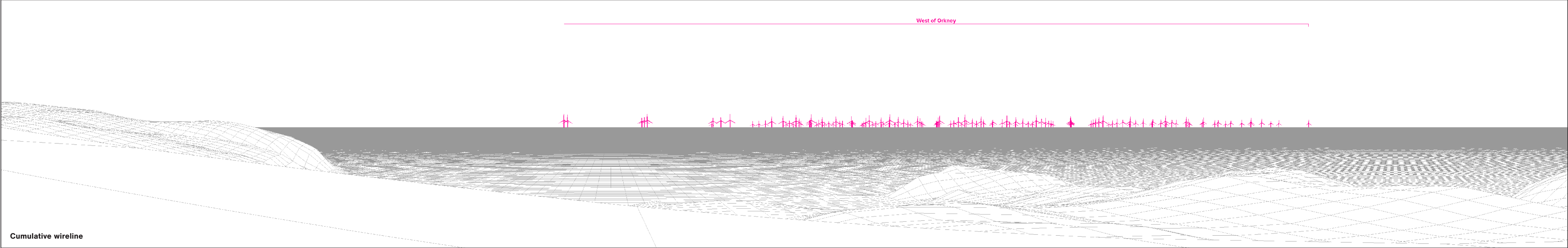
View flat at a comfortable arm's length

Photomontage

OS reference:	304562 E 938649 N	Horizontal field of view:	53.5° (planar projection)	Camera:	Nikon Z 6II
Eye level:	345.84 m AOD	Principal distance:	812.5 mm	Lens:	50mm f/1.4f
Direction of view:	320°	Paper size:	841 x 297 mm (half A1)	Camera height:	1.5m AGL
Nearest turbine:	25.444 km	Correct printed image size:	820 x 260 mm	Date and time:	07/03/2022 10:44



SEI Figure 7.19e
Viewpoint 15: Ben Alisky
Photomontage



OS reference: 257739 E 964403 N
Eye level: 95.41 m AOD
Direction of view: 10°
Nearest turbine: 30.375 km

Horizontal field of view: 90° (cylindrical projection)
Principal distance: 522 mm
Paper size: 841 x 297 mm (half A1)
Correct printed image size: 820 x 260 mm

Legend



Kirkton



Operational
Wind Farm



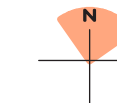
Consented Wind
Farm



In Planning Wind
Farm



Scoping Wind
Farm



SEI Figure 7.20a
Viewpoint 16: Achnahuaigh
Cumulative Wireline (view 1 of 2)