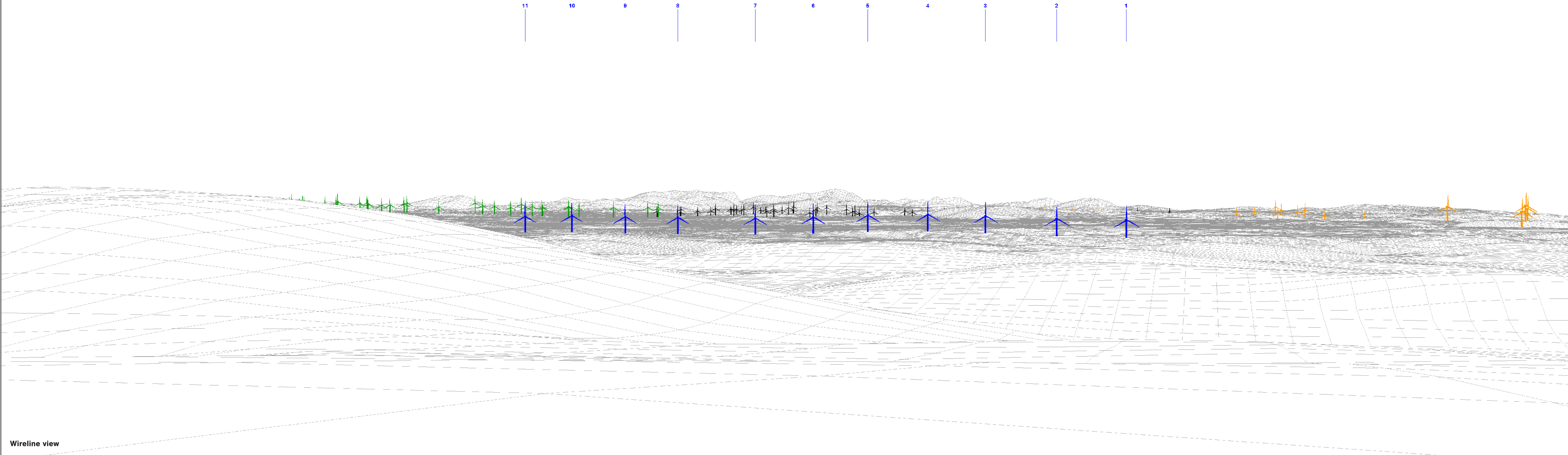


View flat at a comfortable arm's length



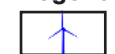
Wireline view

OS reference: 295405 E 961311 N
Eye level: 240.16 m AOD
Direction of view: 255°
Nearest turbine: 7.371 km

Horizontal field of view: 53.5° (planar projection)
Principal distance: 812.5 mm
Paper size: 841 x 297 mm (half A1)
Correct printed image size: 820 x 260 mm

Camera: Nikon Z 6II
Lens: 50mm f/1.4f
Camera height: 1.5m AGL
Date and time: 18/05/2022 13:03

Legend



Kirkton



Operational
Wind Farm



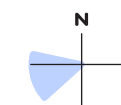
Consented Wind
Farm



In Planning Wind
Farm



Scoping Wind
Farm




SEI Figure 7.12e
Viewpoint 8/C: Beinn Ratha
Wireline

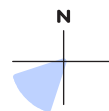


Photomontage

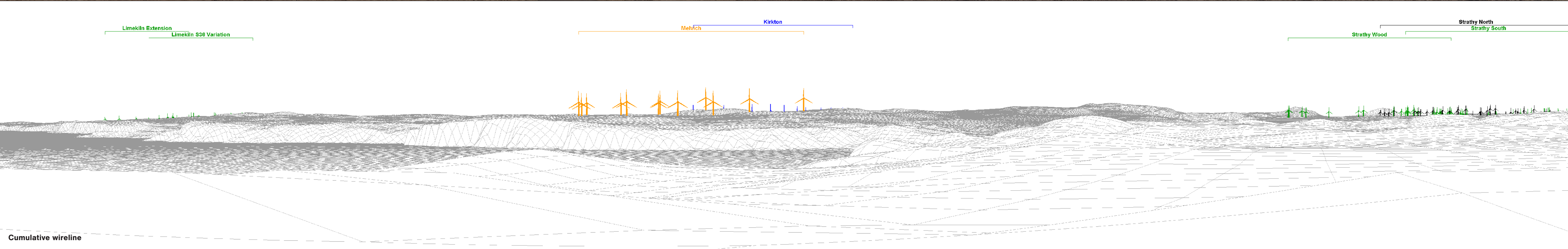
OS reference:	295405 E 961311 N	Horizontal field of view:	53.5° (planar projection)	Camera:	Nikon Z 6II
Eye level:	240.16 m AOD	Principal distance:	812.5 mm	Lens:	50mm f/1.4f
Direction of view:	255°	Paper size:	841 x 297 mm (half A1)	Camera height:	1.5m AGL
Nearest turbine:	7.371 km	Correct printed image size:	820 x 260 mm	Date and time:	18/05/2022 13:03

Legend

 Potential Borrow Pit



SEI Figure 7.12f
Viewpoint 8/C: Beinn Ratha
Photomontage



OS reference: 282784 E 968406 N
Eye level: 69.17 m AOD
Direction of view: 150°
Nearest turbine: 9.105 km

Horizontal field of view: 90° (cylindrical projection)
Principal distance: 522 mm
Paper size: 841 x 297 mm (half A1)
Correct printed image size: 820 x 260 mm

Camera: Nikon Z 6II
Lens: 50mm f/1.4f
Camera height: 1.5m AGL
Date and time: 08/03/2022 15:08

Legend



Kirkton



Operational Wind Farm



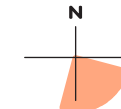
Consented Wind Farm



In Planning Wind Farm



Scoping Wind Farm

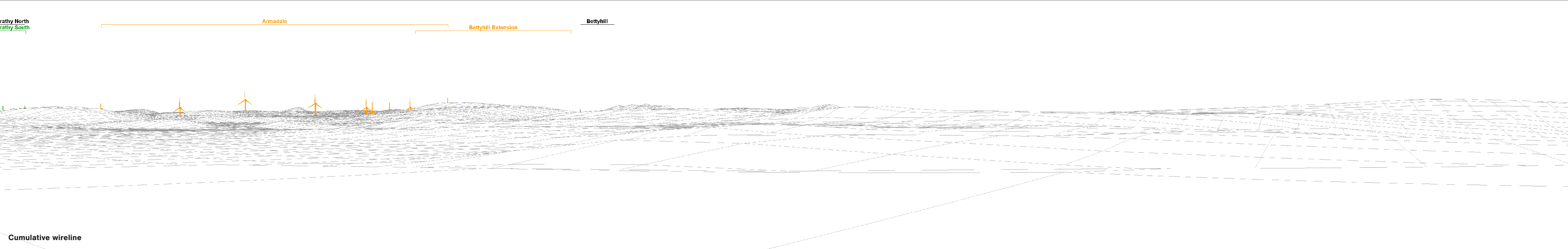


SEI Figure 7.13a

Viewpoint 9: Totegan, near Strathy Point
Panorama with Cumulative Wireline (view 1 of 4)



Existing view



Cumulative wireline

OS reference:	282784 E 968406 N	Horizontal field of view:	90° (cylindrical projection)	Camera:	Nikon Z 6II
Eye level:	69.17 m AOD	Principal distance:	522 mm	Lens:	50mm f/1.4f
Direction of view:	240°	Paper size:	841 x 297 mm (half A1)	Camera height:	1.5m AGL
Nearest turbine:	9.105 km	Correct printed image size:	820 x 260 mm	Date and time:	08/03/2022 15:08

Legend



Kirkton



Operational Wind Farm



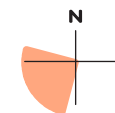
Consented Wind Farm



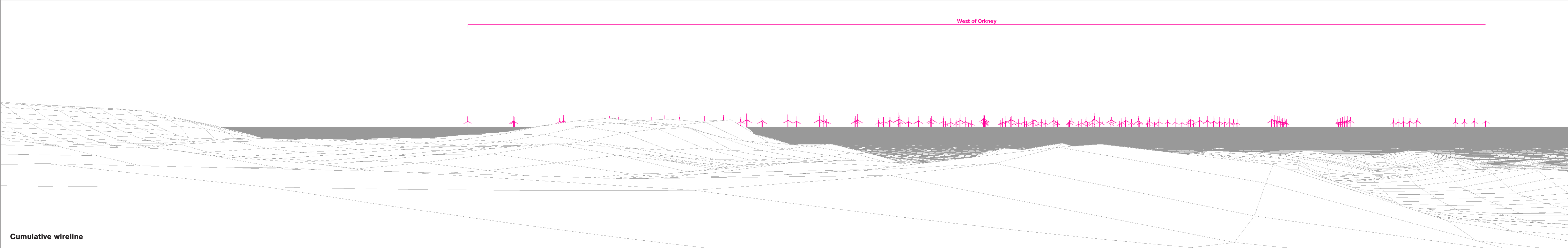
In Planning Wind Farm

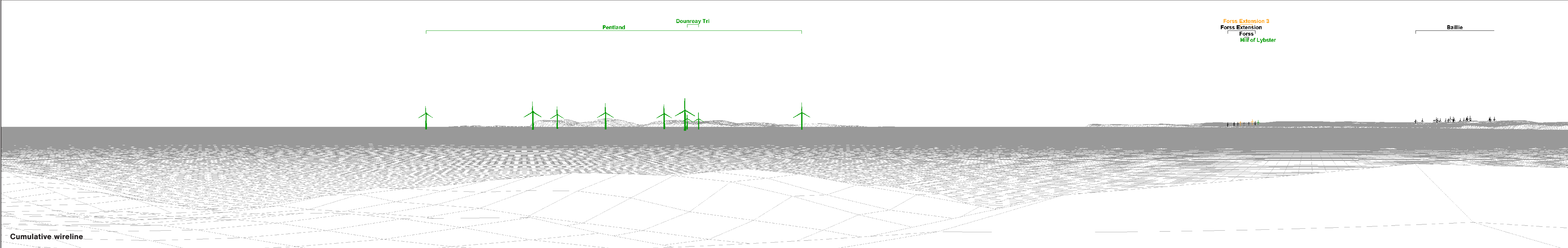


Scoping Wind Farm



SEI Figure 7.13b
Viewpoint 9: Totogan, near Strathly Point
Panorama with Cumulative Wireline (view 2 of 4)





OS reference: 282784 E 968406 N
Eye level: 69.17 m AOD
Direction of view: 60°
Nearest turbine: 9.105 km

Horizontal field of view: 90° (cylindrical projection)
Principal distance: 522 mm
Paper size: 841 x 297 mm (half A1)
Correct printed image size: 820 x 260 mm

Camera: Nikon Z 6II
Lens: 50mm f/1.4f
Camera height: 1.5m AGL
Date and time: 08/03/2022 15:08

Legend



Kirkton



Operational Wind Farm



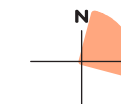
Consented Wind Farm



In Planning Wind Farm



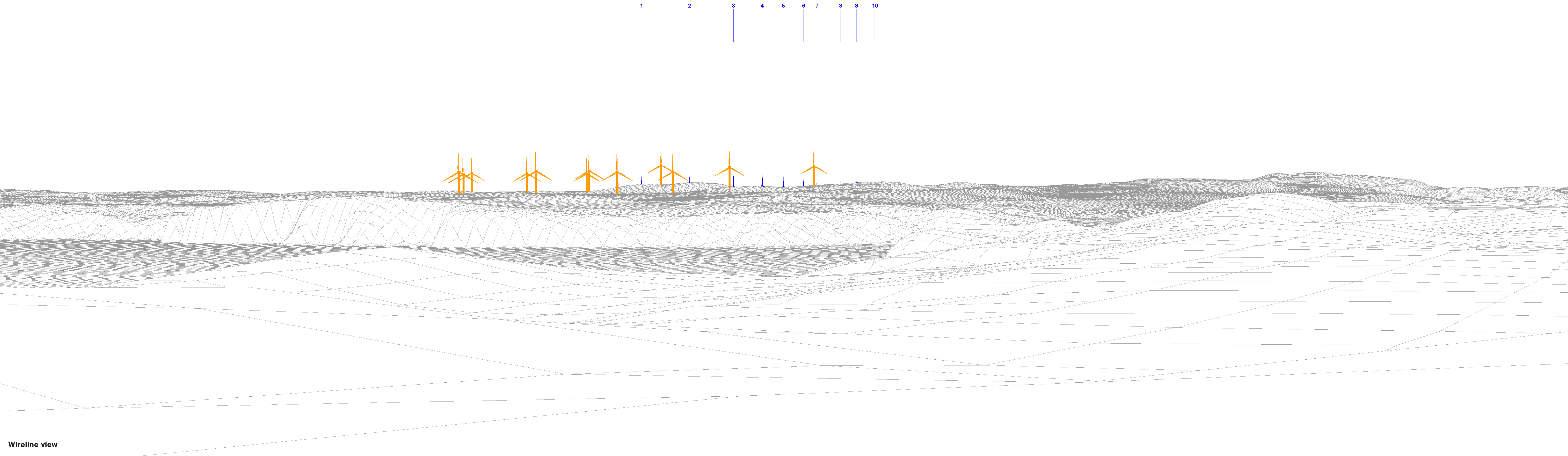
Scoping Wind Farm



SEI Figure 7.13d

Viewpoint 9: Totegan, near Strathy Point
Panorama with Cumulative Wireline (view 4 of 4)

View flat at a comfortable arm's length



Wireline view

OS reference: 282784 E 968406 N
Eye level: 69.17 m AOD
Direction of view: 150°
Nearest turbine: 9.105 km

Horizontal field of view: 53.5° (planar projection)
Principal distance: 812.5 mm
Paper size: 841 x 297 mm (half A1)
Correct printed image size: 820 x 260 mm

Camera: Nikon Z 6II
Lens: 50mm f/1.4f
Camera height: 1.5m AGL
Date and time: 08/03/2022 15:08

Legend



Kirkton



Operational Wind Farm



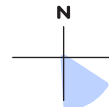
Consented Wind Farm



In Planning Wind Farm



Scoping Wind Farm



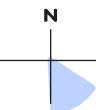
SEI Figure 7.13e
Viewpoint 9: Totegan, near Strathy Point
Wireline



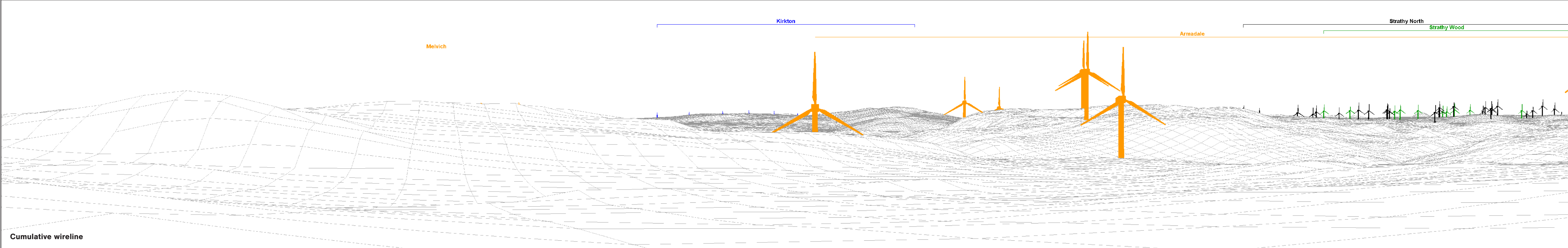
View flat at a comfortable arm's length

Photomontage

OS reference:	282784 E 968406 N	Horizontal field of view:	53.5° (planar projection)	Camera:	Nikon Z 6II
Eye level:	69.17 m AOD	Principal distance:	812.5 mm	Lens:	50mm f/1.4f
Direction of view:	150°	Paper size:	841 x 297 mm (half A1)	Camera height:	1.5m AGL
Nearest turbine:	9.105 km	Correct printed image size:	820 x 260 mm	Date and time:	08/03/2022 15:08



SEI Figure 7.13f
Viewpoint 9: Totegan, near Strathy Point
Photomontage



OS reference: 277450 E 963350 N
Eye level: 126.95 m AOD
Direction of view: 110°
Nearest turbine: 10.819 km

Horizontal field of view: 90° (cylindrical projection)
Principal distance: 522 mm
Paper size: 841 x 297 mm (half A1)
Correct printed image size: 820 x 260 mm

Camera: Nikon Z 6II
Lens: 50mm f/1.4f
Camera height: 1.5m AGL
Date and time: 08/03/2022 14:30

Legend



Kirkton



Operational Wind Farm



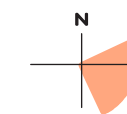
Consented Wind Farm



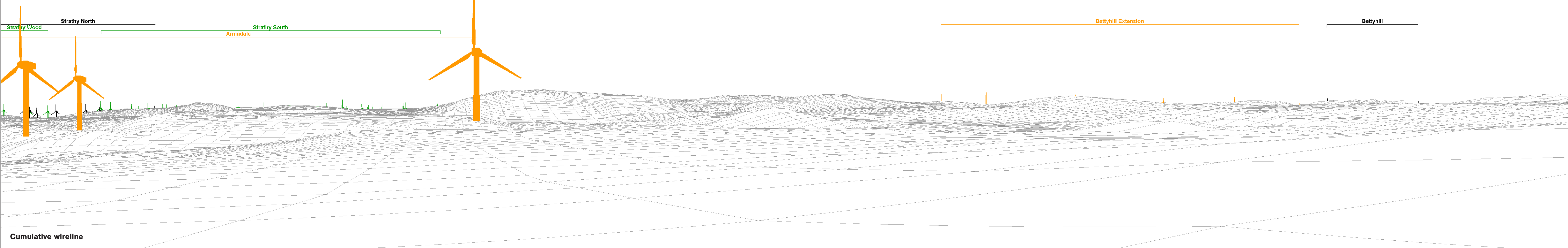
In Planning Wind Farm



Scoping Wind Farm



SEI Figure 7.14a
Viewpoint 10: A836, west of Armadale
Panorama with Cumulative Wireline (view 1 of 4)



OS reference: 277450 E 963350 N
Eye level: 126.95 m AOD
Direction of view: 200°
Nearest turbine: 10.819 km

Horizontal field of view: 90° (cylindrical projection)
Principal distance: 522 mm
Paper size: 841 x 297 mm (half A1)
Correct printed image size: 820 x 260 mm

Camera: Nikon Z 6II
Lens: 50mm f/1.4f
Camera height: 1.5m AGL
Date and time: 08/03/2022 14:30

Legend



Kirkton



Operational
Wind Farm



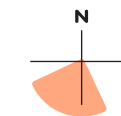
Consented Wind
Farm



In Planning Wind
Farm



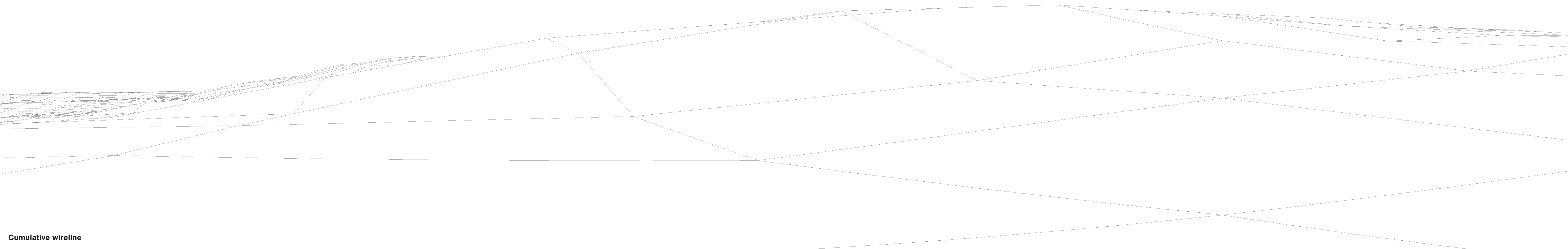
Scoping Wind
Farm



SEI Figure 7.14b
Viewpoint 10: A836, west of Armadale
Panorama with Cumulative Wireline (view 2 of 4)



Existing view

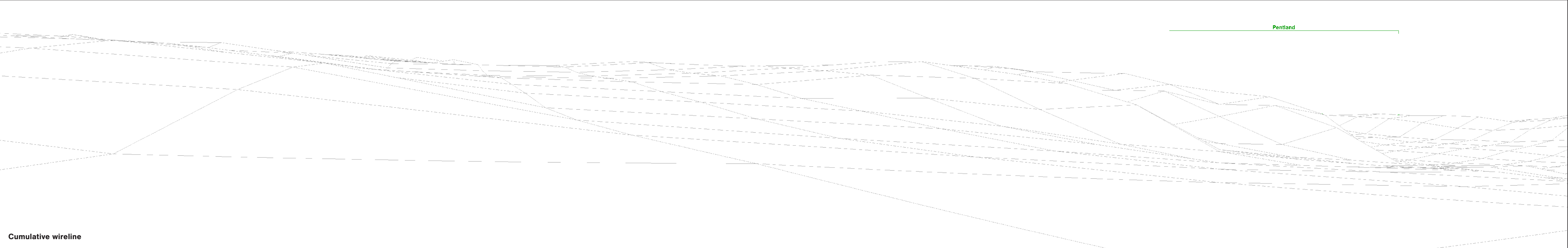


Cumulative wireline

This image provides landscape and visual context only



Existing view



Cumulative wireline

OS reference:	277450 E 963350 N	Horizontal field of view:	90° (cylindrical projection)	Camera:	Nikon Z 6II
Eye level:	126.95 m AOD	Principal distance:	522 mm	Lens:	50mm f/1.4f
Direction of view:	20°	Paper size:	841 x 297 mm (half A1)	Camera height:	1.5m AGL
Nearest turbine:	10.819 km	Correct printed image size:	820 x 260 mm	Date and time:	08/03/2022 14:30

Legend



Kirkton



Operational Wind Farm



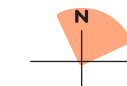
Consented Wind Farm



In Planning Wind Farm



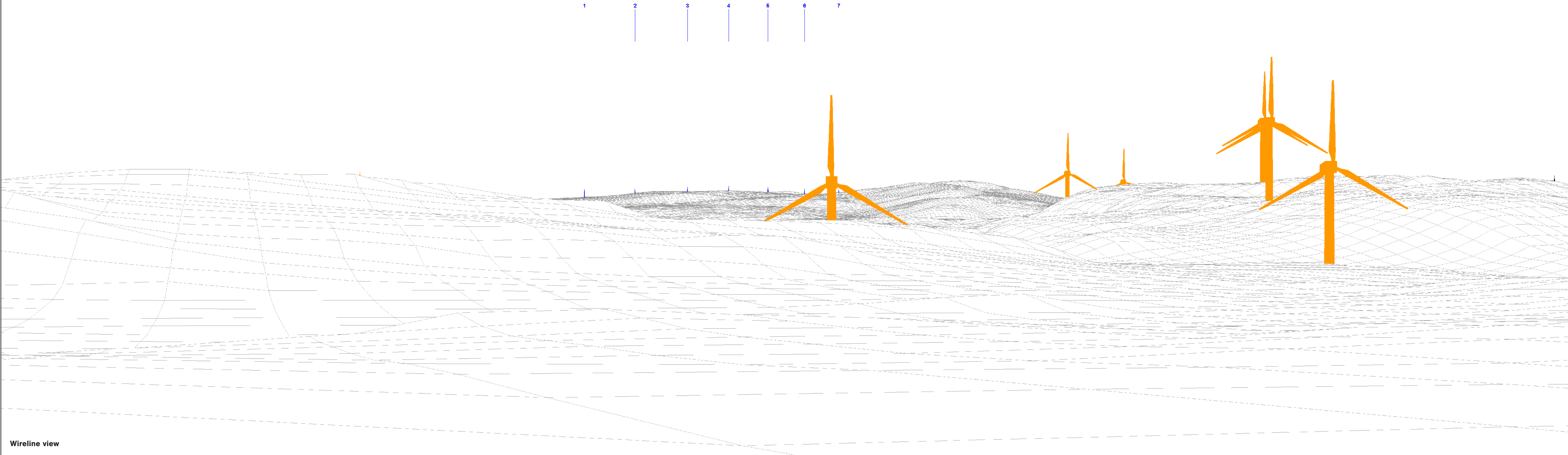
Scoping Wind Farm



SEI Figure 7.14d

Viewpoint 10: A836, west of Armadale
Panorama with Cumulative Wireline (view 4 of 4)

View flat at a comfortable arm's length



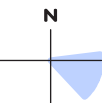
Wireline view



View flat at a comfortable arm's length

Photomontage

OS reference:	277450 E 963350 N	Horizontal field of view:	53.5° (planar projection)	Camera:	Nikon Z 6II
Eye level:	126.95 m AOD	Principal distance:	812.5 mm	Lens:	50mm f/1.4f
Direction of view:	110°	Paper size:	841 x 297 mm (half A1)	Camera height:	1.5m AGL
Nearest turbine:	10.819 km	Correct printed image size:	820 x 260 mm	Date and time:	08/03/2022 14:30

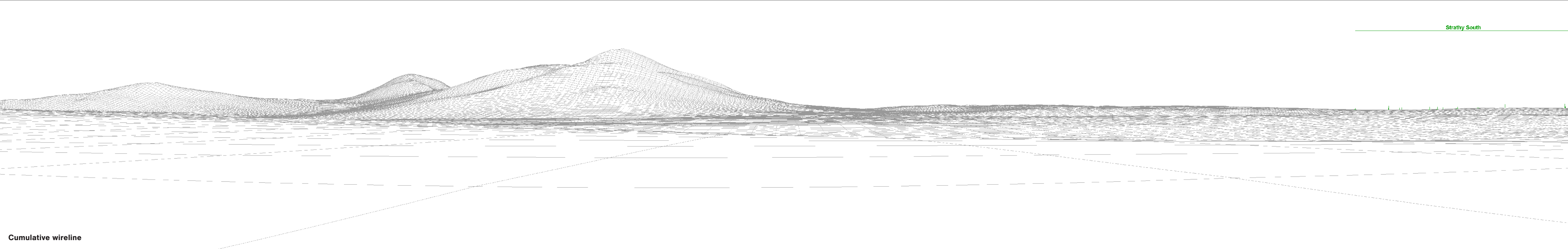


SEI Figure 7.14f
Viewpoint 10: A836, west of Armadale
Photomontage

This image provides landscape and visual context only



Existing view



Cumulative wireline

OS reference: 288605 E 942088 N
Eye level: 167.55 m AOD
Direction of view: 270°
Nearest turbine: 15.835 km

Horizontal field of view: 90° (cylindrical projection)
Principal distance: 522 mm
Paper size: 841 x 297 mm (half A1)
Correct printed image size: 820 x 260 mm

Camera: Nikon Z 6II
Lens: 50mm f/1.4f
Camera height: 1.5m AGL
Date and time: 07/03/2022 14:34

Legend



Kirkton



Operational Wind Farm



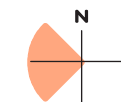
Consented Wind Farm



In Planning Wind Farm



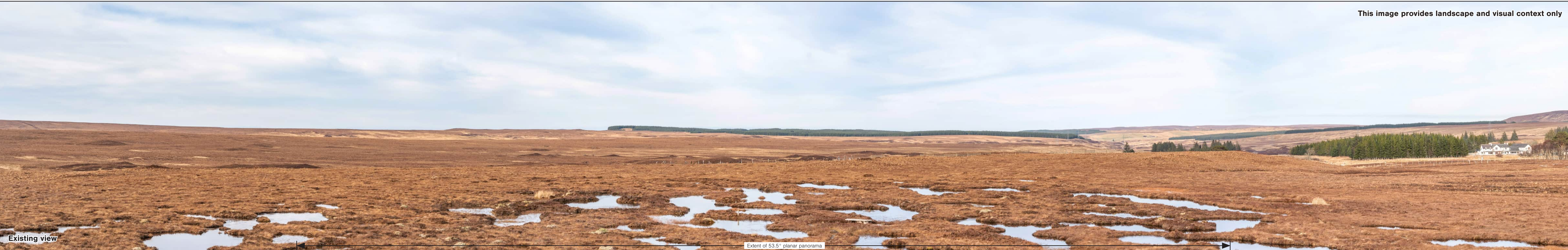
Scoping Wind Farm



SEI Figure 7.15a

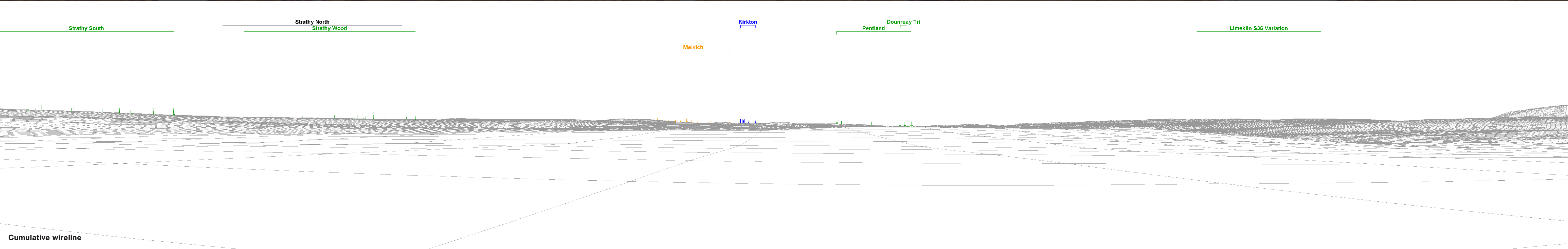
Viewpoint 11: A897, Strath Halladale, Forsinard

Panorama with Cumulative Wireline (view 1 of 2)



Existing view

Extent of 53.5° planar panorama



Cumulative wireline

OS reference: 288605 E 942088 N
Eye level: 167.55 m AOD
Direction of view: 0°
Nearest turbine: 15.835 km

Horizontal field of view: 90° (cylindrical projection)
Principal distance: 522 mm
Paper size: 841 x 297 mm (half A1)
Correct printed image size: 820 x 260 mm

Camera: Nikon Z 6II
Lens: 50mm f/1.4f
Camera height: 1.5m AGL
Date and time: 07/03/2022 14:34

Legend



Kirkton



Operational
Wind Farm



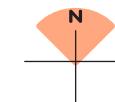
Consented Wind
Farm



In Planning Wind
Farm



Scoping Wind
Farm

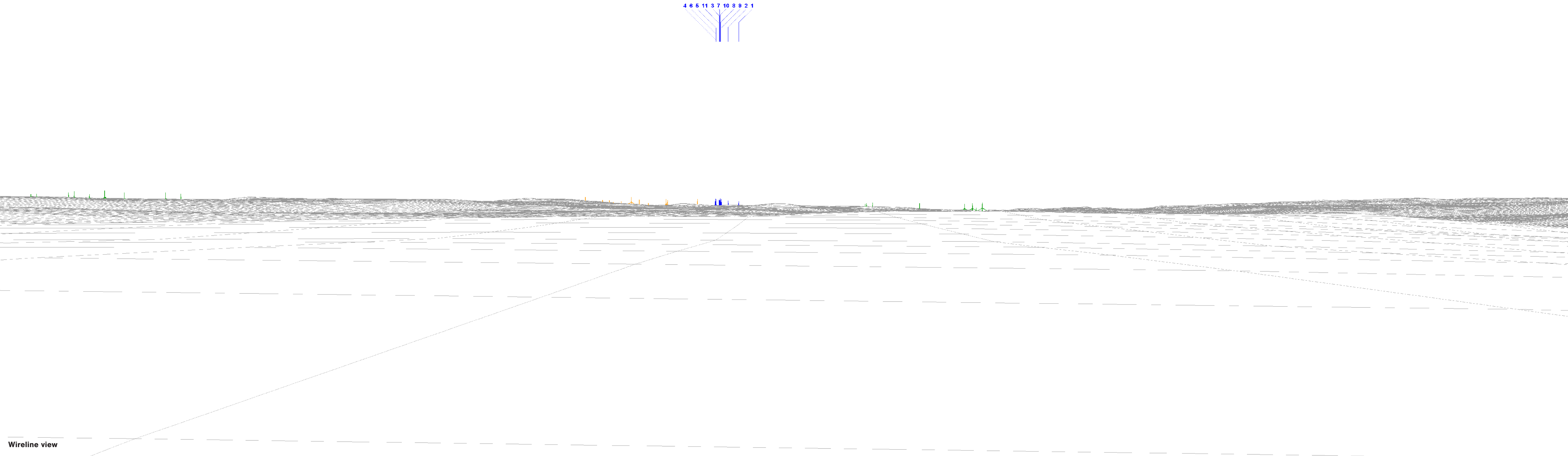


SEI Figure 7.15b

Viewpoint 11: A897, Strath Halladale, Forsinard

Panorama with Cumulative Wireline (view 2 of 2)

View flat at a comfortable arm's length



Wireline view

OS reference: 288605 E 942088 N
Eye level: 167.55 m AOD
Direction of view: 0°
Nearest turbine: 15.835 km

Horizontal field of view: 53.5° (planar projection)
Principal distance: 812.5 mm
Paper size: 841 x 297 mm (half A1)
Correct printed image size: 820 x 260 mm

Camera: Nikon Z 6II
Lens: 50mm f/1.4f
Camera height: 1.5m AGL
Date and time: 07/03/2022 14:34

Legend



Kirkton



Operational
Wind Farm



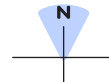
Consented Wind
Farm



In Planning Wind
Farm



Scoping Wind
Farm



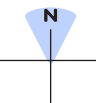
SEI Figure 7.15c
Viewpoint 11: A897, Strath Halladale, Forsinard
Wireline



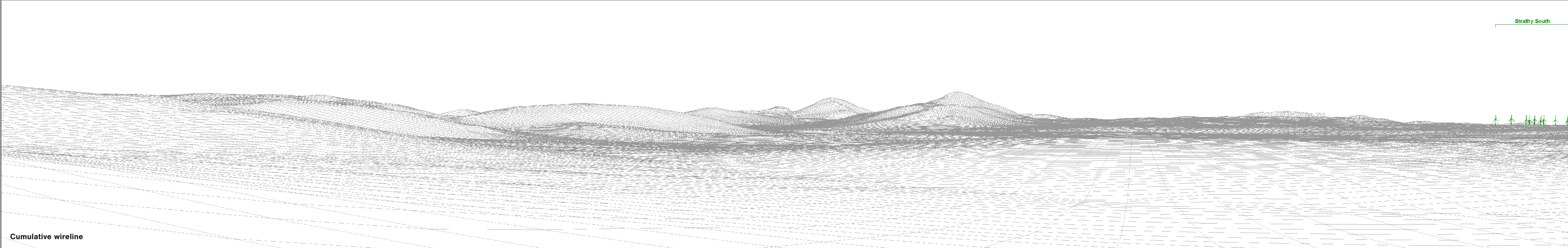
View flat at a comfortable arm's length

Photomontage

OS reference:	288605 E 942088 N	Horizontal field of view:	53.5° (planar projection)	Camera:	Nikon Z 6II
Eye level:	167.55 m AOD	Principal distance:	812.5 mm	Lens:	50mm f/1.4f
Direction of view:	0°	Paper size:	841 x 297 mm (half A1)	Camera height:	1.5m AGL
Nearest turbine:	15.835 km	Correct printed image size:	820 x 260 mm	Date and time:	07/03/2022 14:34



SEI Figure 7.15d
Viewpoint 11: A897, Strath Halladale, Forsinard
Photomontage



OS reference: 293754 E 943063 N
Eye level: 236.31 m AOD
Direction of view: 250°
Nearest turbine: 15.946 km

Horizontal field of view: 90° (cylindrical projection)
Principal distance: 522 mm
Paper size: 841 x 297 mm (half A1)
Correct printed image size: 820 x 260 mm

Camera: Nikon Z 6II
Lens: 50mm f/1.4f
Camera height: 1.5m AGL
Date and time: 19/05/2022 09:25

Legend



Kirkton



Operational Wind Farm



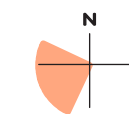
Consented Wind Farm



In Planning Wind Farm



Scoping Wind Farm



SEI Figure 7.16a
Viewpoint 12: Northern edge of Causeymire - Knockfin Flows Wild Land Area
Panorama with Cumulative Wireline (view 1 of 2)