

# Kirkton Energy Park

## Kirkton Wind Farm Ltd

Figure 9.1.5b  
Vantage Point Activity  
(Sep 2019 - Feb 2020) - Geese

### Key

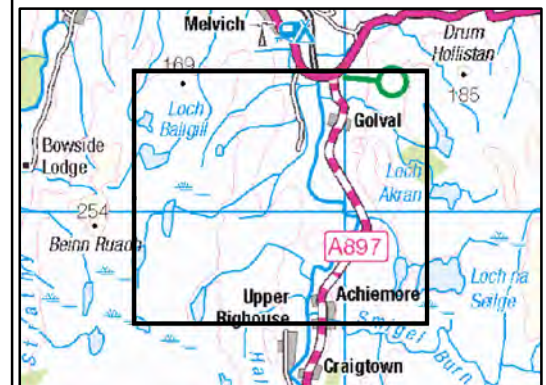
- Site boundary
- Proposed turbine
- Vantage Point

### Species

- Greylag goose
- Pink-footed goose
- Whooper swan

### Height Band

- Below 20m height
- 20 - 150m height
- Above 150m height
- On ground
- Heard only



atmos  
CONSULTING

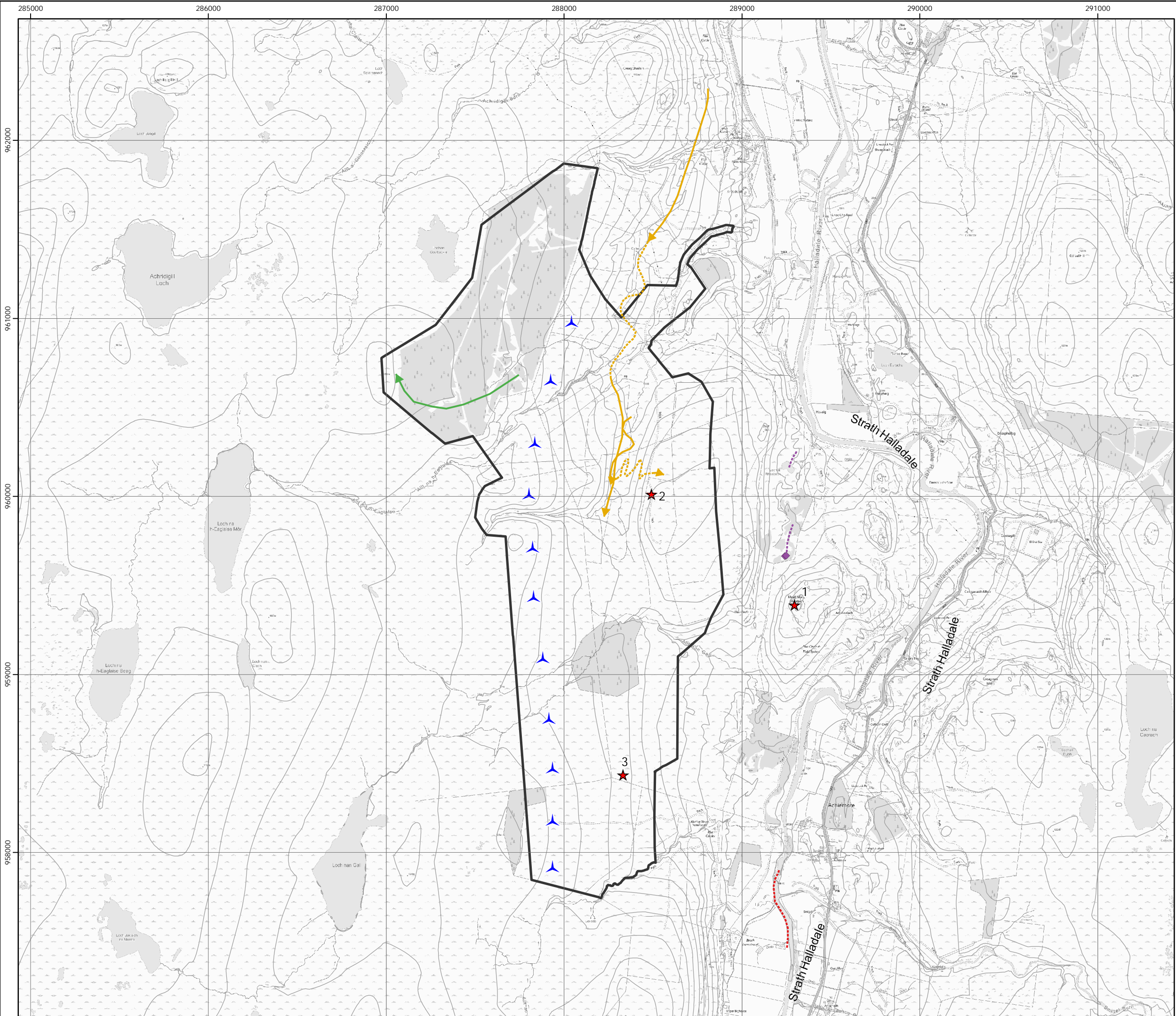
0 0.25 0.5 1  
Kilometres



Scale @ A3:  
1:20,000



© Crown copyright 2022. All rights reserved.  
Ordnance survey licence number 100048146.



Kirkton  
Energy Park

Kirkton Wind  
Farm Ltd

Figure 9.1.5c  
Vantage Point Activity  
(Sep 2019 - Feb 2020) - Other Species

**Key**

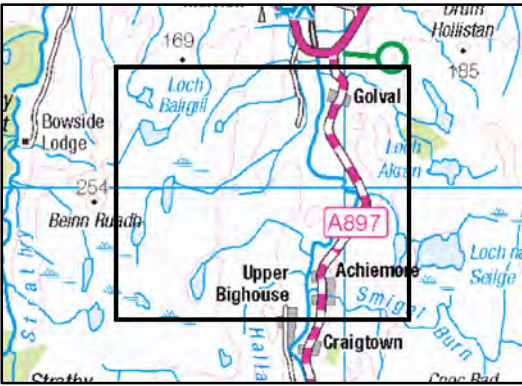
- Site boundary
- Proposed turbine
- Vantage Point

**Species**

- Fieldfare
- Red-breasted merganser
- Shelduck
- Teal

**Height Band**

- Below 20m height
- 20 - 150m height
- Above 150m height
- On ground
- Heard only



atmos  
CONSULTING

0 0.25 0.5 1  
Kilometres

N

Scale @ A3:  
1:20,000

URS  
UKAS

© Crown copyright 2022. All rights reserved.  
Ordnance survey licence number 100048146.

# Kirkton Energy Park

## Kirkton Wind Farm Ltd

Figure 9.1.6a  
Vantage Point Activity  
(Mar - August 2020) - Raptors

### Key

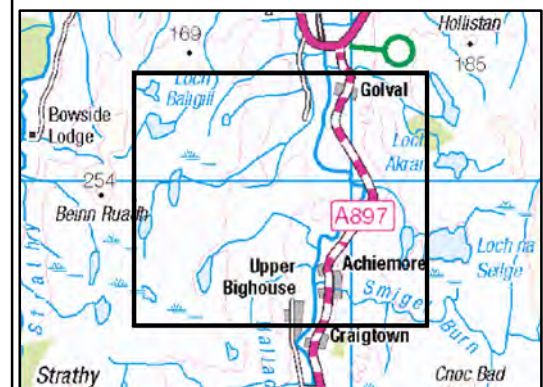
- Site boundary
- Proposed turbine
- Vantage Point

### Species

- Hen harrier
- Merlin
- Peregrine

### Height Band

- Below 20m height
- 20 - 150m height
- Above 150m height
- On ground
- Heard only



atmos  
CONSULTING

0 0.25 0.5 1  
Kilometres



Scale @ A3:  
1:20,000



© Crown copyright 2022. All rights reserved.  
Ordnance survey licence number 100048146.

# Kirkton Energy Park

## Kirkton Wind Farm Ltd

Figure 9.1.6b  
Vantage Point Activity  
(Mar - August 2020) - Waders A

### Key

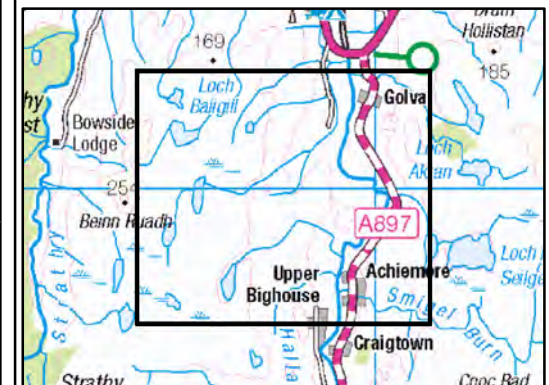
- Site boundary
- Proposed turbine
- Vantage Point

### Species

- Curlew
- Dunlin
- Greenshank
- Lapwing

### Height Band

- Below 20m height
- 20 - 150m height
- Above 150m height
- On ground
- Heard only



atmos  
CONSULTING

0 0.25 0.5 1  
Kilometres



Scale @ A3:  
1:20,000



© Crown copyright 2022. All rights reserved.  
Ordnance survey licence number 100048146.

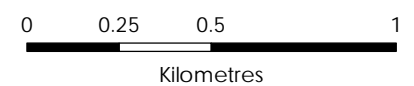
Kirkton Wind  
Farm Ltd

Key
-----

- Species

- Height Band

- 
- A map of the study area in the north-west of Ireland. The map shows the A897 road, which is highlighted in pink. The road runs from the north towards the south, passing through Golva, Achiemore, and Craigtown. Other locations shown include Bowside Lodge, Beinn Píada, Upper Bighouse, and Craigtown. The map also shows several lakes, including Loch Baigill, Loch Alean, Loch na Seilge, and Loch na Seilge. The map is oriented with North at the top. A black box highlights the area around the A897 road, which is the focus of the study.

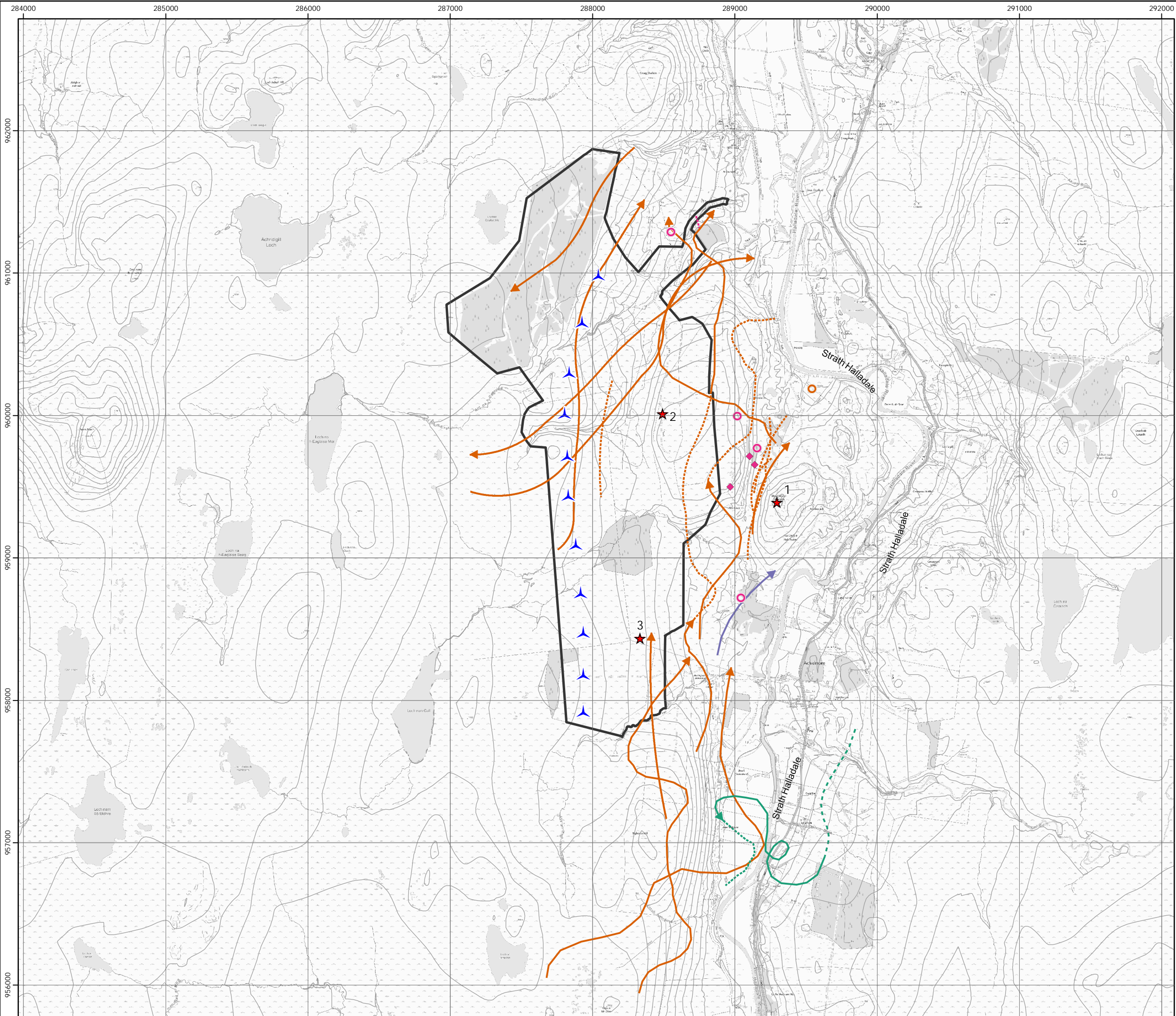


Scale @ A3:  
1:20,481.54



© Crown copyright 2022. All rights reserved.  
Ordnance survey licence number 100048146.

November 2022 TL01n	40421/OR/026e
Drawn by: JT	Checked by: TH    Approved by: JW



# Kirkton Energy Park

## Kirkton Wind Farm Ltd

Figure 9.1.6d  
Vantage Point Activity  
(Mar - August 2020)  
Geese, Swans and Other Species

**Key**

- Site boundary
- Proposed turbine
- Vantage Point

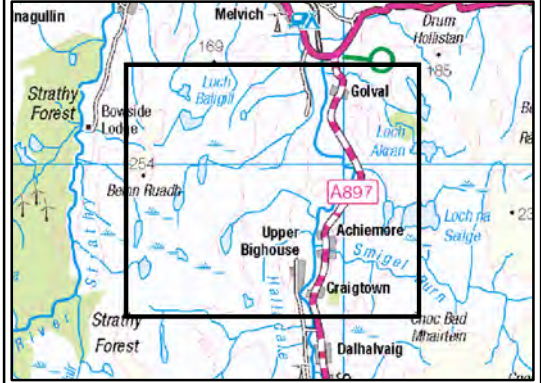
**Species**

- Barnacle Goose
- Greylag Goose
- Whooper Swan
- Cuckoo

**Height Band**

- Below 20m height
- 20 - 150m height
- Above 150m height

On ground  
Heard only



0 0.25 0.5 1  
Kilometres

N

Scale @ A3:  
1:25,000

© Crown copyright 2022. All rights reserved.  
Ordnance survey licence number 100048146.