




Distance to nearest turbine: 9.105 km Camera: Nikon Z 6II Focal Length: 50mm vertical (27°) x 28mm horizontal (65.5°) Camera Height: 1.5m Date: 08/03/2022 Time: 15:08

The images on this page and the previous page are not representative of scale and distance from the actual viewpoint and show the wind farm development in its wider landscape context only.

Figure 15
Viewpoint 9: Totegan, near Strathy Point



Legend
 Potential Borrow Pit

Distance to nearest turbine: 3.103 km Camera: Nikon Z 6II Focal Length: 50mm vertical (27°) x 28mm horizontal (65.5°) Camera Height: 1.5m Date: 17/05/2022 Time: 10:42

The images on this page and the previous page are not representative of scale and distance from the actual viewpoint and show the wind farm development in its wider landscape context only.

Figure 16
Viewpoint A: Loch na Caroach




Distance to nearest turbine: 6.063 km Camera: Nikon Z 6II Focal Length: 50mm vertical (27°) x 28mm horizontal (65.5°) Camera Height: 1.5m Date: 17/05/2022 Time: 13:20

The images on this page and the previous page are not representative of scale and distance from the actual viewpoint and show the wind farm development in its wider landscape context only.

Figure 17
Viewpoint B: Cnoc Bad Mhairstein



Legend
 Potential Borrow Pit

Distance to nearest turbine: 7.371 km Camera: Nikon Z 6II Focal Length: 50mm vertical (27°) x 28mm horizontal (65.5°) Camera Height: 1.5m Date: 18/05/2022 Time: 13:03

The images on this page and the previous page are not representative of scale and distance from the actual viewpoint and show the wind farm development in its wider landscape context only.

Figure 18
Viewpoint C: Beinn Ratha




Distance to nearest turbine: 12.253 km Camera: Nikon Z 6II Focal Length: 50mm vertical (27°) x 28mm horizontal (65.5°) Camera Height: 1.5m Date: 20/03/2020 Time: 12:30

The images on this page and the previous page are not representative of scale and distance from the actual viewpoint and show the wind farm development in its wider landscape context only.

Figure 19
Viewpoint D: Beinn nam Bad Mor



Legend
 Potential Borrow Pit

Distance to nearest turbine: 3.702 km Camera: Nikon Z 6II Focal Length: 50mm vertical (27°) x 28mm horizontal (65.5°) Camera Height: 1.5m Date: 08/03/2022 Time: 09:02

The images on this page and the previous page are not representative of scale and distance from the actual viewpoint and show the wind farm development in its wider landscape context only.

Figure 20
Viewpoint 4: A836 at the Junction to Bighouse



Distance to nearest turbine: 1.485 km Camera: Nikon Z 6II Focal Length: 50mm vertical (27°) x 28mm horizontal (65.5°) Camera Height: 1.5m Date: 17/05/2022 Time:11:25

The images on this page and the previous page are not representative of scale and distance from the actual viewpoint and show the wind farm development in its wider landscape context only.

Figure 21
Viewpoint 1: A897 Strath Halladale



Photomontage

Legend

Potential Borrow Pit

Distance to nearest turbine: 2.162 km Camera: Nikon Z 6II Focal Length: 50mm vertical (27°) x 28mm horizontal (65.5°) Camera Height: 1.5m Date: 08/03/2022 Time: 09:45

The images on this page and the previous page are not representative of scale and distance from the actual viewpoint and show the wind farm development in its wider landscape context only.

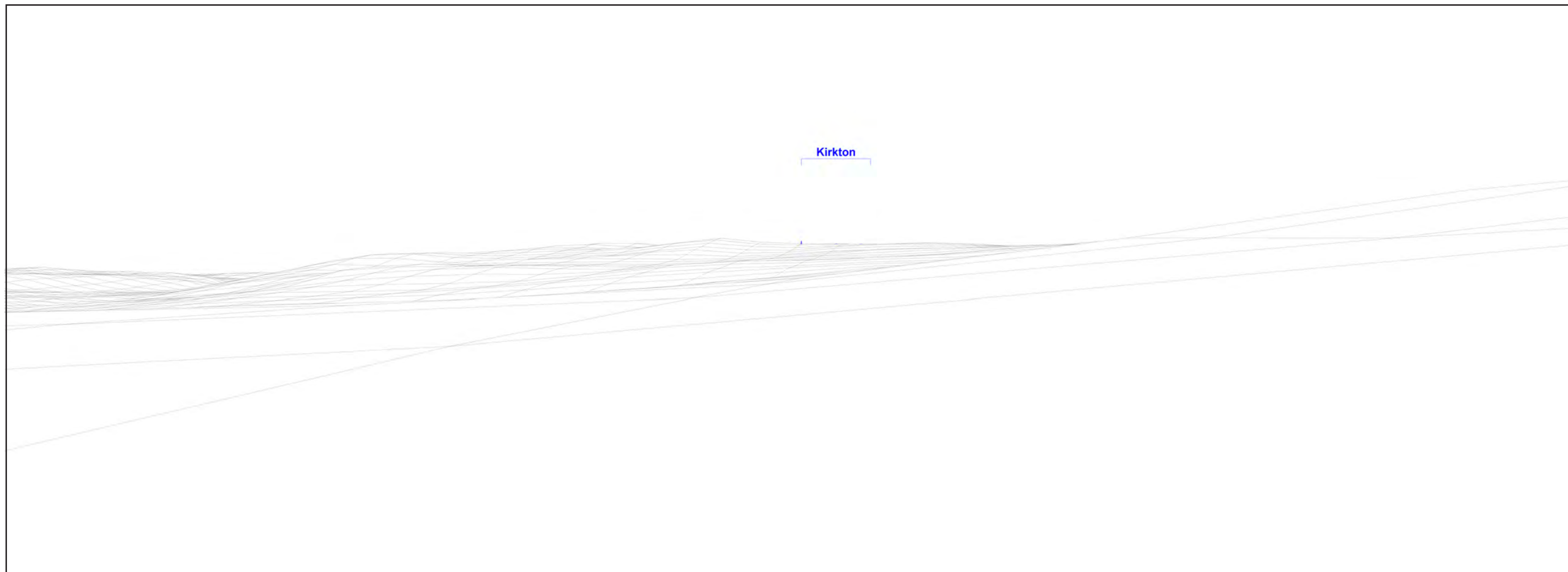
Figure 22
Viewpoint 2: A837 Goval Strath Halladale



Distance to nearest turbine: 3.126 km Camera: Nikon Z 6II Focal Length: 50mm vertical (27°) x 28mm horizontal (65.5°) Camera Height: 1.5m Date: 08/03/2022 Time: 08:47

The images on this page and the previous page are not representative of scale and distance from the actual viewpoint and show the wind farm development in its wider landscape context only.

Figure 23
Viewpoint 3: South East Edge of Melvich

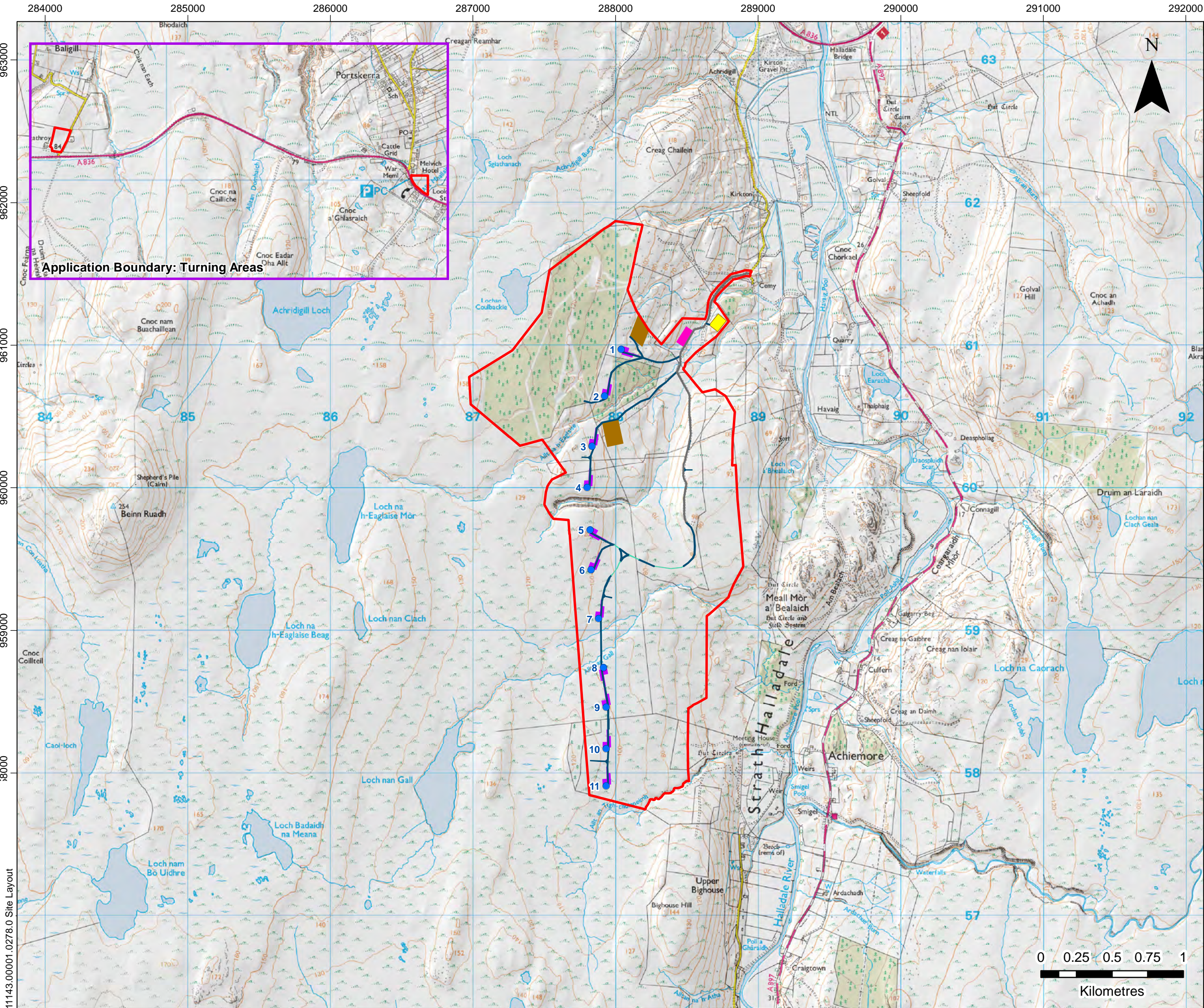


Distance to nearest turbine: 4.582 km

Focal Length: 50mm vertical (27°) x 28mm horizontal (65.5°) Camera Height: 1.5m

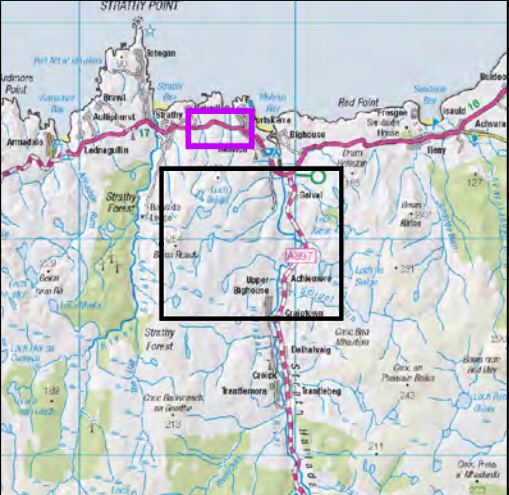
The images on this page and the previous page are not representative of scale and distance from the actual viewpoint and show the wind farm development in its wider landscape context only.

Figure 24
Viewpoint 6: Portskerra



LEGEND

- Application Boundary
- Proposed Turbine
- Existing Track to be Upgraded
- New Track / Turning Head / Passing Place
- New Floated Track
- Proposed Crane Pad
- Proposed Substation Compound
- Proposed Construction Compound
- Proposed Borrow Pit



KIRKTON WIND FARM LTD

SLR

4/5 LOCHSIDE VIEW
EDINBURGH PARK
EDINBURGH
EH12 9DH

T: +44 (0)131 335 6830
www.slrconsulting.com

KIRKTON ENERGY PARK - EIA

DESIGN & ACCESS STATEMENT

SITE LAYOUT

FIGURE 25

Scale 1:25,000 @ A3 Date NOVEMBER 2022

EUROPEAN OFFICES

United Kingdom

AYLESBURY

T: +44 (0)1844 337380

BELFAST

belfast@slrconsulting.com

BRADFORD-ON-AVON

T: +44 (0)1225 309400

BRISTOL

T: +44 (0)117 906 4280

CARDIFF

T: +44 (0)29 2049 1010

CHELMSFORD

T: +44 (0)1245 392170

EDINBURGH

T: +44 (0)131 335 6830

EXETER

T: + 44 (0)1392 490152

GLASGOW

glasgow@slrconsulting.com

GUILDFORD

guildford@slrconsulting.com

LONDON

T: +44 (0)203 805 6418

MAIDSTONE

T: +44 (0)1622 609242

MANCHESTER (Denton)

T: +44 (0)161 549 8410

MANCHESTER (Media City)

T: +44 (0)161 872 7564

NEWCASTLE UPON TYNE

T: +44 (0)191 261 1966

NOTTINGHAM

T: +44 (0)115 964 7280

SHEFFIELD

T: +44 (0)114 2455153

SHREWSBURY

T: +44 (0)1743 23 9250

STIRLING

T: +44 (0)1786 239900

WORCESTER

T: +44 (0)1905 751310

Ireland

DUBLIN

T: + 353 (0)1 296 4667

France

GRENOBLE

T: +33 (0)6 23 37 14 14